



TMC -34

TMC Parts Manual



TMC-49



TMC-58

TO PLACE AN ORDER OR OBTAIN INFORMATION:

WEBSITE:

www.truemfg.com (Visit our Parts eStore at: <http://estore.truemfg.com>)
Parts Department e-mail address: parts@truemfg.com

SEND INQUIRIES TO:

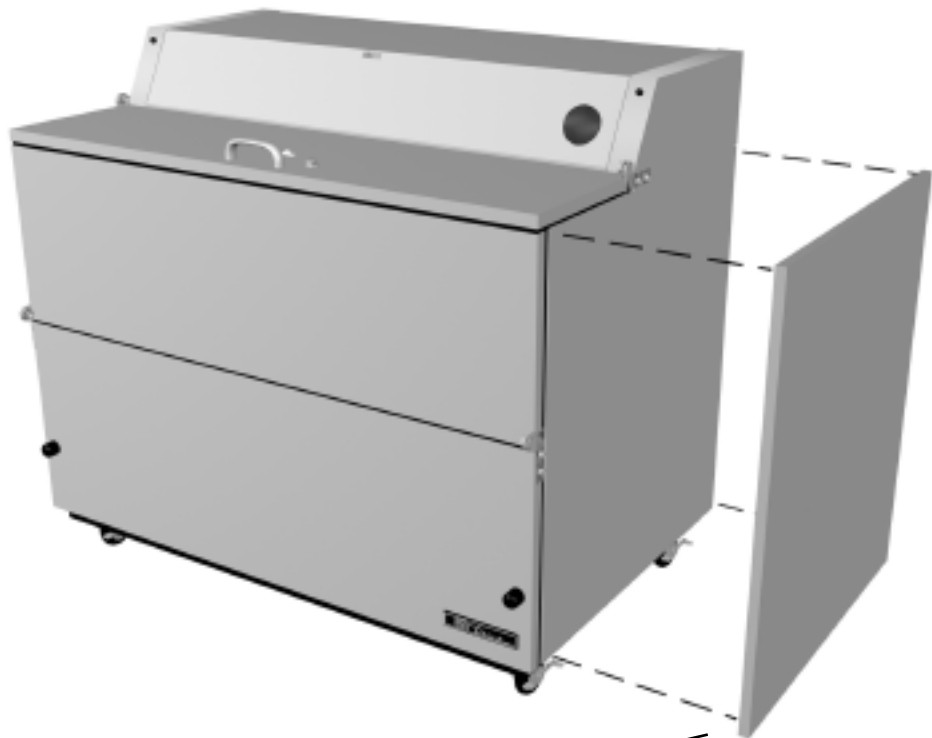
TRUE MANUFACTURING COMPANY, INC. ATTN: PARTS DEPARTMENT
St. Charles Industrial Center • P.O. Box 970 • O'Fallon, Missouri 63366 • U.S.A

CALL TOLL-FREE:

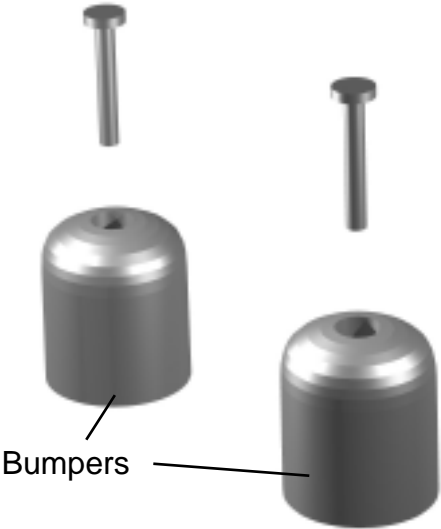
800-424-TRUE (Direct to Parts Department)
or 800-325-6152 (U.S.A & Canada only)
OR CALL: 636-240-2400

FAX: 636-272-9471

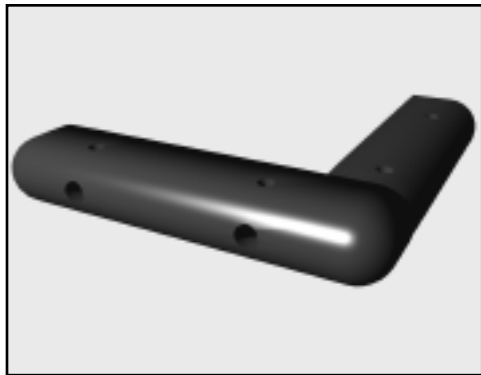
Accessories



Cabinet End
(For Refurbishing)



Bumpers



Corner Milk Cooler Bumpers

Castors, Legs & Levelers



TMC
leg, castor plate



Legs, Stemmed

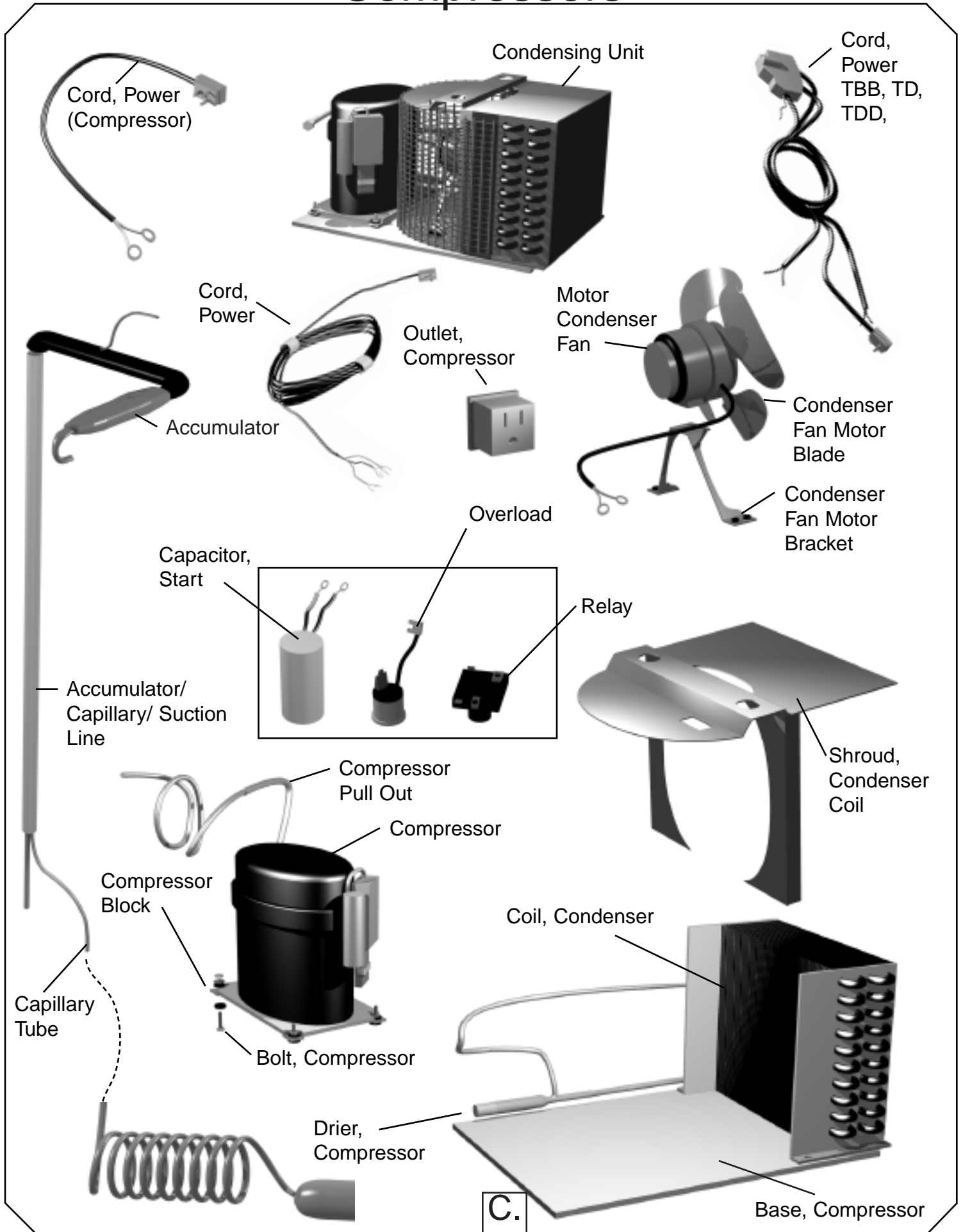


Castors
(TMC's)



Leg, Seismec

Compressors

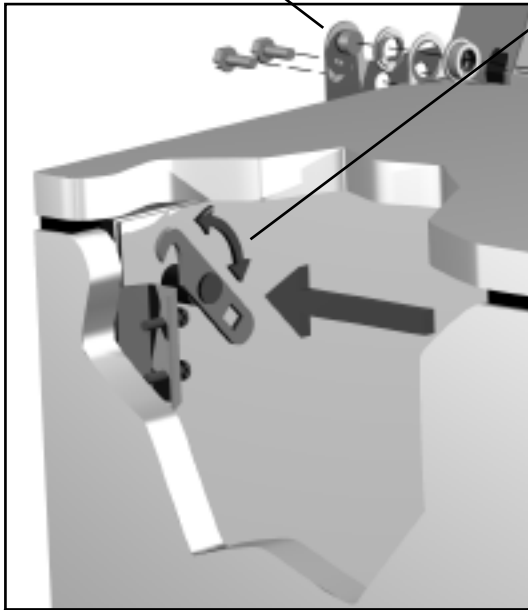


Door Parts

TMC

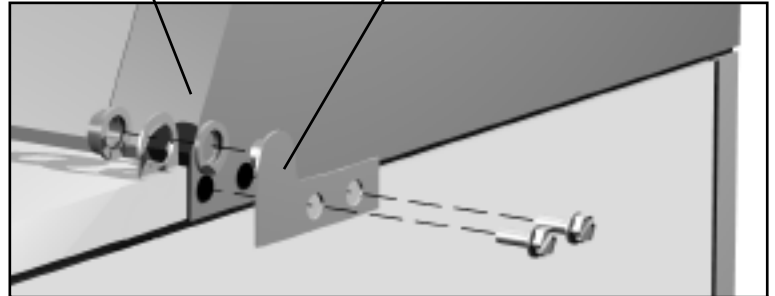
Hinge Assembly

Latch Door
Lock Plate



Bracket
Door Hinge

Hinge Assembly



Door

TMC-49

Thermometer



Bumpers

Handle

Door

Lock Door

D.

